



VI-23L-100IT

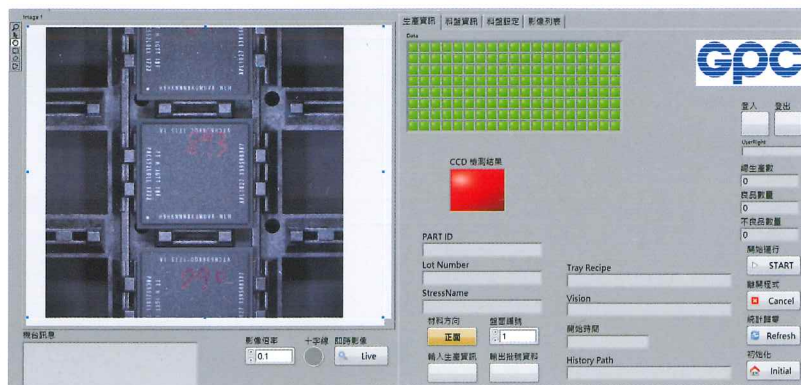
Jedec Tray 2D AOI Trolley Type with UPS

DESCRIPTIONS

- 適用材料: BGA、QFN、QFP on Jedec Tray
Applicable materials: BGA、QFN、QFP on Jedec Tray
- 設備介紹:
Equipment introduction:
-適用流程及工站
Applicable processes and work stations
(1) IQC 進料檢 Incoming Quality Control
(2) IPQC: 生產中首盤檢及抽檢 In Process Quality Control of FAIR (First Article Inspection Report) and random inspection during the production.
- 具備檢測照片存查功能、生產報表上傳功能, 可以提供tray mapping之資訊。
The inspected photo could be stored and upload function available, tray mapping information as well.
- 可移動式封裝材料外觀 2D AOI 檢測推車。
Movable trolley type for the package appearance 2D AOI inspection.
- 操作人員手動將Jedec Tray 放置平台上, 依照選擇之產品及檢測項目, 進行 2D AOI 檢測。
The operator manually places the Jedec Tray onto the platform and performs 2D AOI inspection according to the recipe selection.
- UPS離線式供電(充滿電狀況, 可待機運行60分鐘)。
Offline UPS power supply (60 minutes available once the full charge of the UPS).
- 設備優點:
Equipment advantages:
-節省人工: 可移動至機台邊, 進行全自動首件檢測, 且無須專職人員操作。
Labor saving: Trolley type design, which is able to be operated beside the tester handler, no expert & experiences need.
- 提高效率: 相比於人工檢測, 使用此設備可提供至少五倍的檢測效率, 有效減少產線等待時間, 並可依不同材料厚度設定相機之景深數值。
High efficiency: Compared with the manual inspection, the trolley inspection can provide at least 5 times capability of inspection efficiency. To reduce the idle time in production line, also easy to set the focus depth of camera according to different package thickness.
- 追蹤數據: 檢測後, 系統自動生成檢測報告及儲存檢測照片, 並可上傳或發送報告, 也可選購無線網路接收器, 在移動操作過程中與主機進行無線連結。
Data tracking: After the vision inspection, the system will generate the inspection report and storage the inspection photos automatically. The report can be uploaded or be sent. A wireless network receiver can be purchased to connect with the host during the operation.
- 穩定耐用: 使用高精度電動滑台, 材料傳送過程平穩也具備高精度定位之優點。
Stable and durable: Using high-precision components, the smooth transmission and has high-precision positioning are the advantages.
- 操作簡單: 藉由觸控螢幕操作設備, 友善的操作介面輕鬆易學, 容易上手, 套裝軟體提供快速的檢測設定, 只需5~10分鐘即可完成新型號或新缺陷的設置。
Friendly operation interface: Operated via the touch screen, interface is easy to learn and use. The software provides the fast recipe settings, it will take only 5 to 10 minutes to complete the new models or new defects setting.



AOI Mechanism



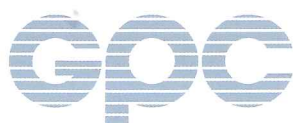
Vision Inspection

Performances

UPH	150 sec / Tray (Package Size 3mm*3mm)
Loader & Unloader	Jedec Tray by Manual
Inspection	Defects of Crack > 0.06mm Defects of Copper Exposure > 0.06mm Defects on Solder Ball > 0.06mm
Measuring Repeatability	±0.0225mm
Controller	IPC

Facility Requirement

Dimension (W*D*H)	750mm*650mm*1750mm
Weight	90kgs
Power Supply	AC 220V Single Phase / 60Hz
Painted Color	Can be specified by customer



盛技精密股份有限公司

6F-13, No. 40-2, Sec. 1, Minsheng N. Rd.,
Guishan Dist, Taoyuan City 33391, Taiwan.
Tel: +886-3-326-8733 Fax: +886-3-326-0377

<http://www.gpcltd.com.tw>

Email: sales@gpcltd.com.tw